

WHAT'S HOT IN
COMMERCIAL A/V



MEYER SOUND MAKES
HOME THEATER MOVE



ALARM.COM, COMCAST
BUY ICONTROL

CEPro

AUGUST 2016
CEPRO.COM

INTEGRATION
AUDIO/VIDEO
NETWORKING
CONTROL
BUSINESS

PROJECTS OF THE YEAR

26 Incredible and
Inspiring Installations

PAGE 31



Best Multipurpose Room, Gold;
installation by Moore Audio Design

CE PRO PROJECTS OF THE YEAR HOME THEATER \$75,000–\$150,000: SILVER



WILLIAM PSOLKA

HIGHLY ENGINEERED SCREENING ROOM DESTINATION

THE FAMILY THAT owns this stunning home theater had never been at a loss for places to watch movies in its home. “There are various other media areas with full surround-sound setups,” says Bob Gullo, chief creative officer at Piscataway, N.J., integration firm Electronics Design Group (EDG). “But what they were lacking was a singular-purpose room and a place where they could truly escape to enjoy their favorite films ... a special entertainment destination.” So while the house was undergoing a major renovation, the team at EDG transformed a portion of the home’s lower level into a dedicated theater, complete with a sealed door to close it off from the rest of the house.

Soundproofing this room so that no noise from outside could enter or audio from the commercial-grade amps and speakers could leave was a top priority. In addition to insulation behind the walls, above the ceiling, and inside the seating platform (provided by the general contractor), EDG covered the walls in acoustical fabric. Along with enhancing the acoustical properties of the room, the fabric gave EDG a place behind which to install the seven Klipsch speakers and two subwoofers. As is the case with most of its dedicated theater projects, EDG specified commercial-grade speakers and subs. “Choosing pro products provides an experience that’s closer to a real cinema than standard

home theater products,” says Gullo.

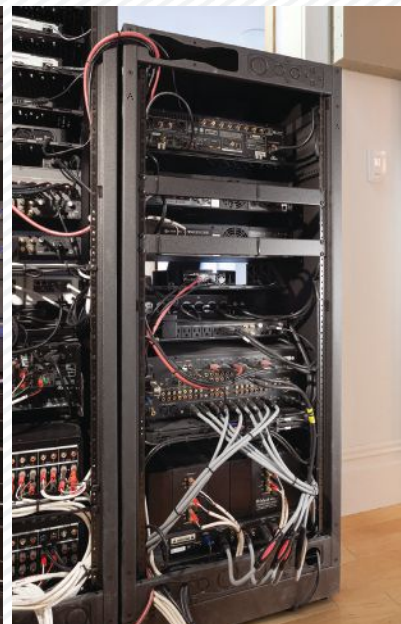
The video performance is top-notch, too, thanks to a Sony 4K resolution projector and 138-inch Elite Screens screen combination, which is fed by an Oppo Digital Blu-ray player, Apple TV and cable box sources. A Control4 SR-260 remote lets users control the gear plus three lighting scenes — high, medium and low — provided by a Lutron QS system. **CE Pro**

SYSTEMS & EQUIPMENT

PROJECTOR: Sony
SCREEN: Elite Screens
SPEAKERS: Klipsch Professional Cinema
AMPS: Crown, McIntosh
PROCESSOR: McIntosh
A/V SOURCES: Oppo Digital Blu-ray, Apple TV, Sony 4K Media Player
CONTROL: Control4
LIGHTING CONTROL: Lutron
ACOUSTICAL TREATMENTS: AcousticSmart, Kinetics

Systems Design &

Installation: Electronics Design Group, Piscataway, N.J., edgonline.com



CE PRO PROJECTS OF THE YEAR HOME THEATER \$25,000–\$75,000: SILVER + BRONZE



WILLIAM PSOLKA

CUSTOM CATERING TO CONTENT OF ALL KINDS

4 K VIDEO IS WHERE it's at in home theater, but some clients still love their collection of standard DVDs and even videotapes, as was the case with the owners of this crafted-from-scratch theater. The team from Electronics Design Group (EDG), of Piscataway, N.J., catered to varied video by installing an 11-foot-wide, 2.35:1 aspect ratio Stewart Filmscreen Cine-Curve screen with full masking to alter its shape for 1.82:1, 16:9 and even 4:3 formatted video.

A Sony 4K Ultra HD projector delivers the video of choice and pairs up nicely with a 9.2-channel arrangement of Totem Acoustic Tribe speakers and subwoofers; a Control4 remote or mobile app on

an iPad allows the owners to easily A/V operation.

It was also important that the room itself be visually engaging. EDG installed a fiber-optic star ceiling that twinkles on command from the Control4 remote. The stars are one of several lighting zones, which allows the owners to alter the ambiance on a whim. "This affords them a lot of flexibility," says Bob Gullo, chief creative officer at EDG. "They can choose to turn on only the fiber-optic stars, add in the sconce, turn on only the step lights, or several other combinations." The Control 4 app can also be used to adjust the room temperature and view real-time images captured by any of several surveillance cameras positioned throughout the property. **CE Pro**

SYSTEMS & EQUIPMENT

PROJECTOR: Sony
SCREEN: Stewart Filmscreen
WHOLE-HOUSE CONTROL: Control4
LIGHTING CONTROL: Lutron
SPEAKERS & SUBWOOFERS: Totem Acoustic
BLU-RAY, AMPS & AUDIO PROCESSING: Integra

Systems Design & Installation: Electronics Design Group, Piscataway, N.J., edgonline.com