

HOLIDAY BUYER'S GUIDE

30 GIFT IDEAS

# AUDIO VIDEO INTERIORS

DECEMBER 1996

THE HOME THEATER AUTHORITY



HOME THEATER: SHARP  
POLK, DA-LITE & DSS



Reprinted with  
permission from  
**Audio Video  
Interiors**  
December 1996.

# Home Theater Aficionado

A cigar lover delights in his JBL and Sony dedicated home theater, while an AudioEase system delivers entertainment to six zones of his elegant New Jersey house.

STORY BY  
DONALD B. TRIVETTE  
INSTALLATION BY  
ELECTRONICS DESIGN  
GROUP INC.  
ARCHITECTURE BY  
VERCESI + SCHARFSRITZ  
INTERIOR DESIGN BY  
GARY WELLER  
INTERIOR DESIGN  
CABINETS BY  
PG FURNITURE DESIGN  
PHOTOGRAPHY BY  
JENNIFER LEVY

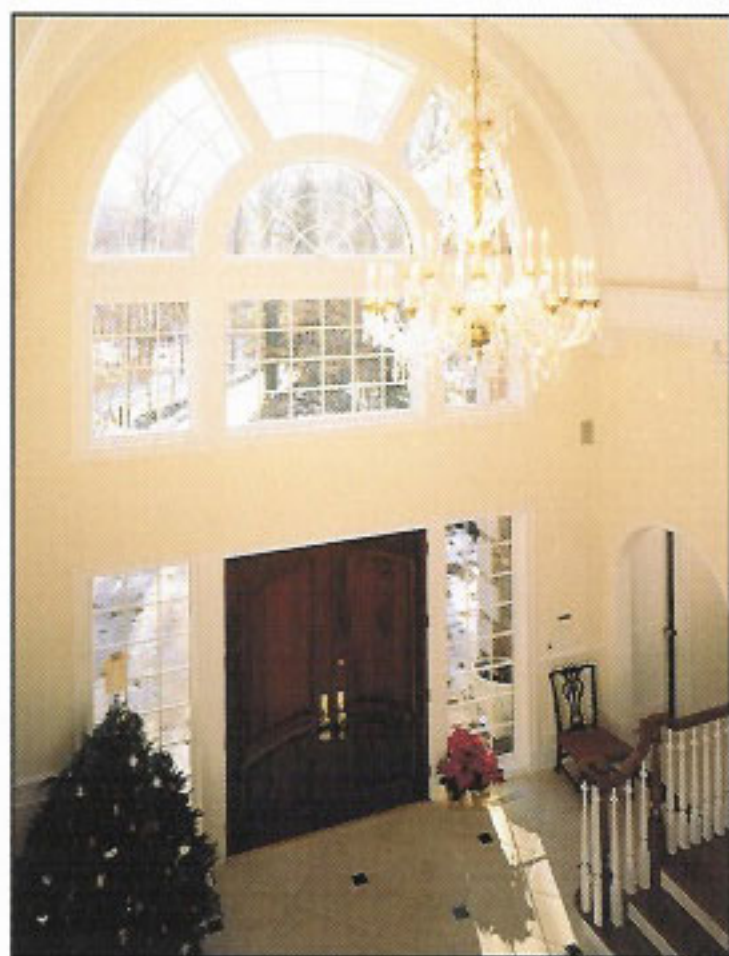


**B**ob Gullo of Electronics Design Group in Edison, New Jersey, knew this was no ordinary client. Their first meeting took place in the backyard of the client's rented house. "He was sitting outside in the cold—it was winter—wearing a coat and wireless headphones, watching TV through the window and smoking a cigar," says Gullo. The client likes—no, loves—fine cigars, but his wife isn't fond of them in the house.

The purpose of the meeting was to plan the electronics in the client's new home, then under construction in an upscale New Jersey neighborhood about 20 minutes from the city. It was soon apparent, Gullo says, that the client liked movies just as much as cigars.

The house is a 6,300-square-foot French Colonial set on a wooded, flag-shaped lot with a long driveway. The area in New Jersey where the client wanted to build had no vacant sites, so he purchased and razed an existing house just for the land. The result is a handsome, traditional home on a

*Two-story barrel-vaulted ceilings and windows accentuate the living room that is adorned with French and English antiques. It is one of the six zones that receives distributed music from an AudioEase SP-2 system controller.*



wooded site in an established neighborhood.

Designed from the inside out—the decorator was hired before the architect—the interior is furnished with comfortable French and English antiques. The open plan features a two-story barrel-vaulted entrance hall extending through the house to become an elegant family room.

At one end of the residence, adjacent to the formal living area, is a room more commonly found in an English manor house: the smok-

ing room. This airtight chamber has its own ventilation system so that the cigar smoke can't seep into other parts of the residence. On the second floor are the master suite and bedrooms. The ground floor contains a spa/hot tub, exercise room, and a 12-seat theater decorated to look like a movie palace of the 1930s.

The house was well under construction before Gullo was called in by Gary Weller, the interior designer. The two have worked together on other projects for the past eight years, so there was none of the squabbling over speaker placement and projector location that can mar such a collaboration.

The theater measures 14 feet wide by almost 20 feet deep. A two-foot space behind the Stewart screen was needed to accommodate the depth of the massive JBL speaker system; the left, center, and right loudspeakers along with subwoofers are housed under the screen in a

# Home Theater Aficionado



*A Mitsubishi 50-inch rear-projection TV and Hi-Fi VCR, Miller & Kreisel loudspeakers and subwoofer, and a Sony digital satellite system deliver stellar home theater to the family room.*

Installation by Bob Gullo, Electronics Design Group Inc., 60 Ethel Rd. W., Unit 4, Piscataway, NJ 08854, (732) 650-9800. Fax: (732) 650-1250, [www.edgusa.com](http://www.edgusa.com). • Architecture by Roland Scharfspitz, Vercesi + Scharfspitz, 353 Broad Ave., Leonia, NJ 07605; (201) 947-8510. • Interior Design by Gary Weller Interior Design, 15 Lowell Court, Freehold, NJ 07728; (908) 462-4302. • Construction by Joe Distaulo Jr., Distaulo Construction Mgt. Co., Rio Vista Drive, Alpine, NJ 07620; (201) 784-9307. • Custom Cabinetry by Peter Simon, PG Furniture Design, 219 Lewis St., Oakhurst, NJ 07755; (908) 531-7717.

## **THEATER**

Sony VPH 1252Q data-grade video projector  
Sony PC 1271/IFB3000 line doubler/switcher  
Sony SAT-B1 Digital Satellite Receiver  
Sony MDP 605 laserdisc player  
Sony SLV 780 VHS Hi-Fi VCR  
Stewart Luxus 1 3-gain 16:9 video screen  
Draper Eclipse screen-masking system  
Bautex 5060 motorized drapery system  
JBL HT THX surround-sound speaker & subwoofer system  
Kenwood KMX-1 THX amplifier  
Kenwood KCX-1 THX surround-sound processor  
AMX Axcnt 2 controller  
AMX TX-SK soft key handheld touchscreen  
ADA ACC2 AC controller  
ADA Pul 3 relay

Lutron GRX-4000 GRAFIK Eye w/A/V interface  
Irwin Seating: Springfield Model  
Red theater chairs (12)

## **MULTI-ROOM AUDIO SYSTEM**

AudioEase SP-2 system controller & amplifiers  
AudioEase touchpanels (6)  
AudioEase handheld remotes (2)  
AudioEase IR repeater system  
Sony CDPC-90ES 10-disc CD changers (2)  
Pioneer cassette deck  
Philips AM/FM tuner  
KEF CR 160Q speakers (24)  
Parasound Electronics Technology AWS 280 outdoor speakers (2)  
Sonance volume controls (11)  
Sonance DB4 speaker interfaces (3)  
ADA A/C controller

## **FAMILY ROOM**

Mitsubishi VS-5075 50-inch rear-projection TV  
Mitsubishi HS-U650 Hi-Fi VCR  
Sony SAT-B1 Digital Satellite System  
Miller & Kreisel S-80 loudspeakers  
Miller & Kreisel VX 7 subwoofer

## **MASTER BEDROOM SITTING AREA**

Mitsubishi CS-31205 TV  
Mitsubishi HS-U550 Hi-Fi VCR  
INCA motorized lift

## **SMOKING ROOM**

Mitsubishi CS-4573 TV  
Mitsubishi HS-U500 Hi-Fi VCR  
Sony MDP 550 laserdisc player  
Sony SAT-B1 Digital Satellite Receiver

## **EXERCISE ROOM & SPA**

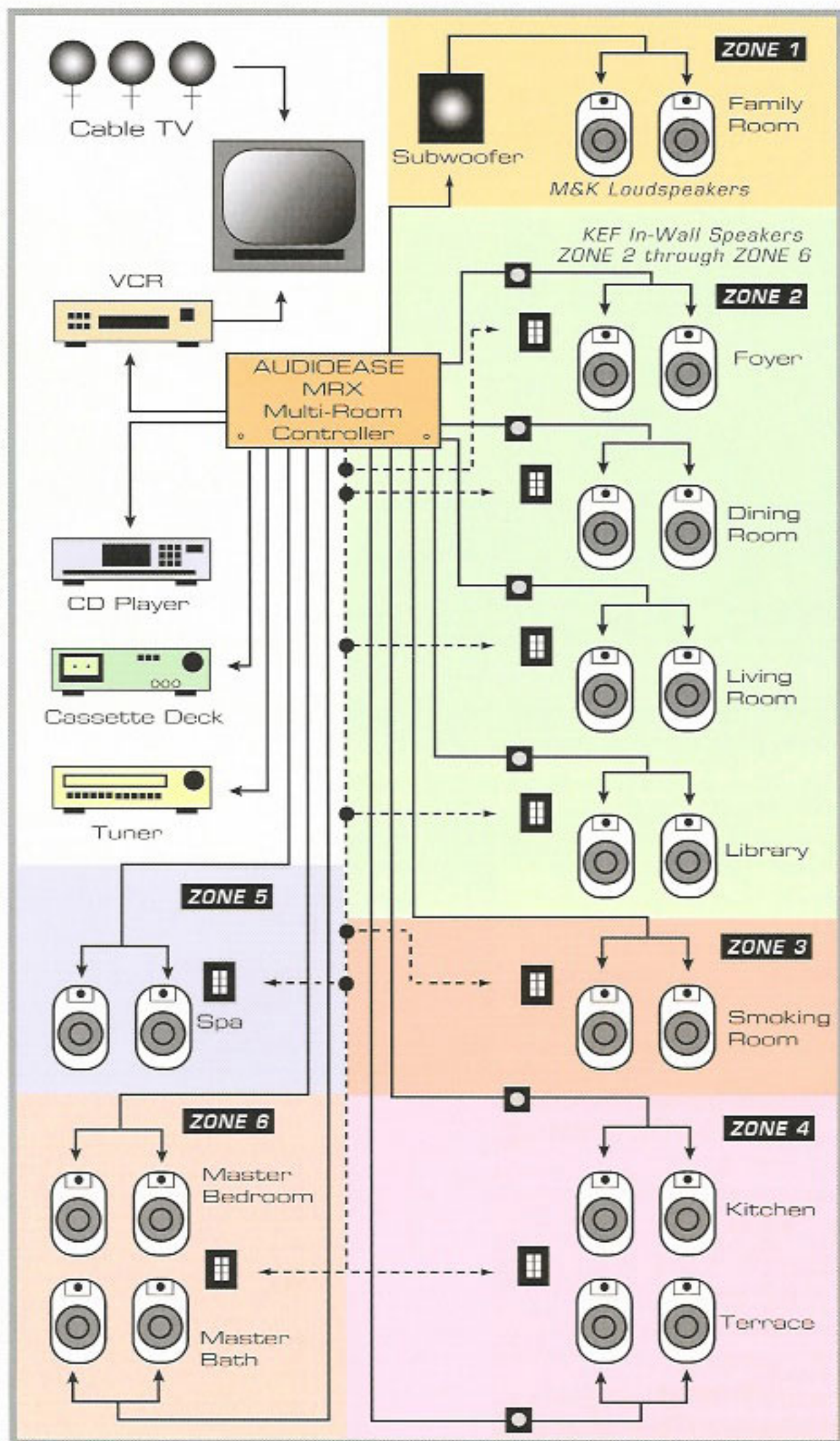
Mitsubishi CS-31203 31-inch TV  
Sonance Sonamp 2120 amplifier  
Pivotelli TV & VCR  
mounting brackets (2)

## **DAUGHTER'S ROOM**

Mitsubishi CS-27205 27-inch TV  
Mitsubishi HS-U550 Hi-Fi VCR

## **PHONE SYSTEM**

Panasonic KXT 61610 electronic modular switching system:  
KX-T7030 display phones (4)  
KX-T7020 speakerphones (12)  
KX-T30860D doorphone adapters (2)  
KX-T30865 doorphones (2)

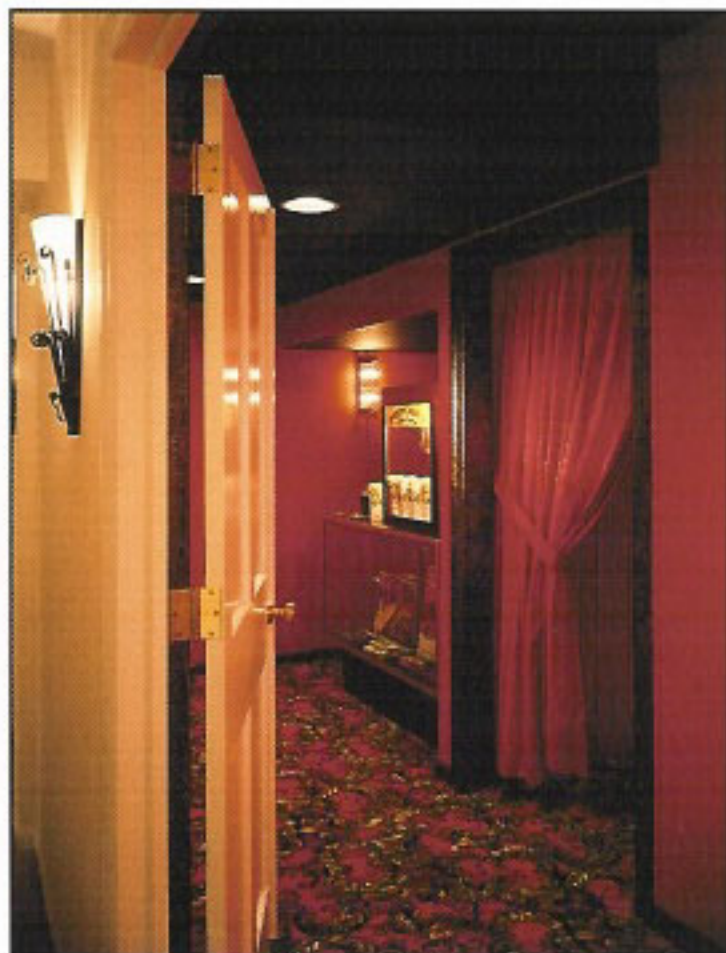


A custom-built mahogany cabinet houses a Philips tuner, two Sony 10-disc CD changers, Pioneer cassette deck and the AudioEase system controller and amplifier (below). The multiroom audio diagram is pictured at the left.



# Home Theater Aficionado

*A Sony VPH1252Q data-grade video projector with high-definition capabilities fires onto a Stewart 110-inch screen. The JBL THX speaker system provides full surround sound for the 20- x 14-foot theater.*



cloth-covered cabinet. Dipole speakers are mounted on the side walls. The screen itself, measuring 110 inches diagonally, is fitted with a Draper masking system to show both the 16:9 letterbox format and the 4:3 broadcast format.

"We selected a Sony VPH1252Q projector," Gullo says, "because of its multiple aspect ratios, picture quality and reliability."

The projector is high-definition-ready for the day when those broadcasts become a reality, but until then, the system uses a Sony line doubler to get the extra resolution that is absolutely necessary for a true theater experience. "Without the line doubler you don't have a theater," Gullo insists, "you just have a big TV."

To the right of the screen, between faux marble columns and behind red drapes, is the equipment cabinet and storage for the client's 1,500 tapes and hundreds of laserdiscs. The seating, identical to that found in commercial movie











houses, is from Irwin seating of Canada. Gary Weller selected a traditional design that complements the art deco wall sconces and the English Axminster carpeting. "The client wanted an elegant movie theater in the grand style," Weller explains, "and I tried to get all the details correct."

He succeeded admirably: the lobby outside the theater is decorated with both vintage and current movie posters; on the fully-stocked candy counter sits an industrial popcorn machine.

The red velvet seats are set on risers so that the second row is six inches higher than the first, and the third row is a foot higher. This gives a clearer sightline than is found in theaters with a sloped floor.

To contain the sound from the Kenwood THX amplifier and surround processor, the theater is constructed with two layers of three-quarter-inch

sheetrock mounted on resilient channels. This isolates the walls and ceiling from the structure. To further dampen the sound, a Decidamp blanket is sandwiched between the layers of drywall.

Control was an important issue for the client. He wanted a true one-button system that both his wife and 8-year-old daughter can use. Ed Condiracci, Electronics Design Group's engineer, programmed an AMX softkey controller to run the show. "We chose the AMX," he says, "because it has a backlit screen that can be easily seen in the dark. It uses radio transmission instead of infrared, so it doesn't need to be pointed to operate."

The radio receiver converts the signals into an infrared signal that washes the front of the equipment. When the client selects a source—VCR, laserdisc, TV—it is powered on along with the THX systems, and the lights begin to dim to a preset level as the curtains are opened. The Screen button selects the aspect ratio and lowers or raises the Draper mask as required. Pressing the Off button reverses the process and brings up the house lights over a 60-second period.

Other parts of the house are connected to a multi-room AudioEase system whose equipment—along with a 50-inch rear-projection TV and assorted VCRs, tuners, and twin 10-disc Sony CD players—is housed in a custom-built, 12-foot long, mahogany cabinet located in the family room. The AudioEase system covers six zones including the family room, living/dining/library, kitchen/terrace, master bedroom, spa, and the smoking room, making it possible to listen to any program in any room. Closed-circuit cameras, located at outside doors, are modulated to TV channels so that any set in the house can monitor the entrances.

The client recently added a Sony Digital Satellite System to feed TVs in the family room, theater, and, of course, his beloved smoking room. He has finally come in out of the cold. ♦

*Irwin seating and components from Kenwood, Sony and ADA are dramatically displayed. Drapery is controlled by Bautex and an AMX softkey controller runs the show.*



*A Panasonic phone and Lutron GRAFIK Eye for lighting control reside at the rear of the theater.*