



Solutions for the modern home and business

Vol. 2 2003

Confused? Frustrated? Overwhelmed? Are these some of the feelings that come to mind when thinking about your custom electronics needs? Let Solutions be your guide. In this issue we showcase a new Sony LCD TV, talk about aspect ratios for DVDs, diagnose fuzzy and washed out projection pictures, and have some fun with music and movie reviews. So put your feet up on your desk, sit back, left mouse click, and enjoy.

In this issue...

- From the Corner Office
- Product & Technology News
- Manufacturer's Spotlight
- EDG Project Highlights
- Service Center

From the corner office

Remember Records?

Today as I write this piece we're getting a wonderful blitz of snow (6"+) here in Tewksbury, NJ. So I decided to make the most of this white wonderland and spend the day in my home office, it's a large bright sunny room, in the front of the house, with a comfortable couch and fully stocked wet mini bar (*stocked with diet coke*). My home office has all the usual equipment PC's, printer, fax, and a DSL connection. But the best part is the audio gear. I call this my two channel rig, consisting of a Krell Amp/Preamp, Krell CD player, B&W Nautilus 803 Speakers and a Turntable (*phonograph, record player-lot of names for the device!*)



[Read More...](#)

Product & Technology News

For additional information on any of the products listed below contact an EDG Systems Consultant at 732.650.9800 or via [e-mail](#).™

Electro-Kinectics™
*Remotely Controlled Pocket Door Mechanism;
 Power Television Pullout and Swivel*



The automation of the cabinet shown above is a great eye catcher and labor saver.

- Simply push the button on the hand held wireless remote and the doors of the cabinet begin to swing open.

[Read More...](#)

[Become a fan of EDG on Facebook!](#)

[Electronics Design Group, Inc.](#)

facebook

www.EDGonline.com

Name:
Electronics Design Group, Inc.

Status:
No Recent Updates

Fans:
461

Contact [EDG](#) at (732) 650-9800 to find out how to make your next project the best it can be!

[Visit EDGonline.com](http://www.edgonline.com)

Monthly Spotlight

Best Home Theater



Check out our [portfolio](#) of extraordinary home theater and component installations.

Sony's Proprietary WEGA Engine™ System

- Direct Digital Circuitry (DDC)
- Digital Reality Creation™ Multifunction Circuitry
- Multi Image Driver (MID™ X)
- CineMotion™ Reverse 3-2 Pulldown Technology
- Sony Proprietary Panel Driver LSI for LCD
- HDTV Monitor With Floating Panel Design
- DVI-HDTV Interface
- Memory Stick® Media Playback (JPEG)*
- Dual Built-In NTSC Tuners (Media Box)

[Read More...](#)

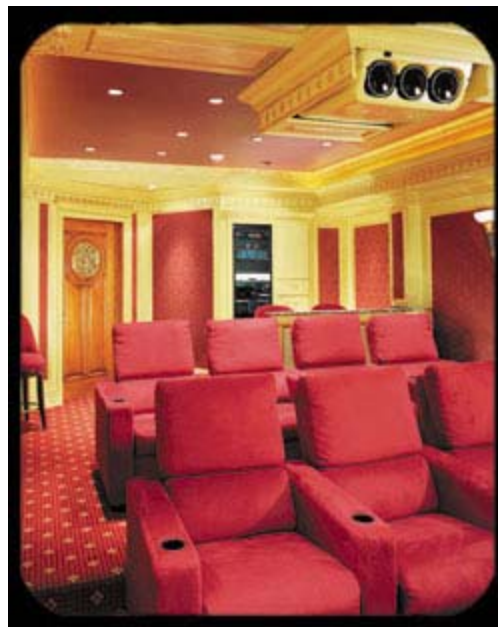
EDG Project Highlights



Award Winning Theater

This client wanted serious sound with great video, just like the theater we had designed and installed for their neighbor, so we had a great performance point of reference to start from. The theater has been the staging ground for many fun-filled family weekends and weeknight sporting events, and also earned EDG a record setting fifth national award; CEDIA's *Electronic Lifestyles™* Award for "Best Home Theater".

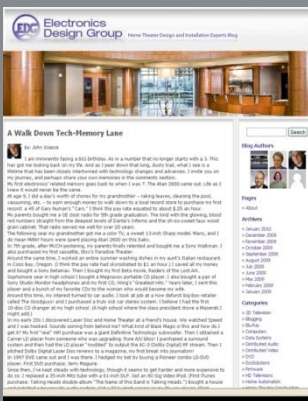
This winning project is reminiscent of the gold and glory days of the legendary movie palaces of old. With an allocated space of 15' x 22' and 9.5' ceiling, the client wanted to seat 8 comfortably, with an area at the back for a counter and bar stools where he could connect to his office via



his PC, or just enjoy a sandwich while watching a movie or sporting event.

Genelec Active Loudspeakers deliver stellar sound in this acoustically perfect theater. The video quality is equally spectacular featuring a Sony Projector and Stewart 110" diagonal eight foot wide screen, luxurious reclining seats, lighting and curtain control. A degree in rocket science isn't necessary to use the theater. An AMX Control System operates every function by simply touching menu items and icons on the wireless color panel.

[Visit the EDG Blog](#)



Contact [EDG](#) at (732) 650-9800 to find out how to make your next project the best it can be!

Have a question for the Service Center? Simply send an e-mail to solutions@edgusa.com.

Problem Solving Tip of the Month

AMX Control System

On the front, left hand side of your Accent II or III control panel there is a blinking green light. If you're experiencing trouble with your control panel, check to see what this light is doing. A solid green light can simply mean that the system needs to be rebooted; see steps below. Any further trouble you should contact the EDG Service Department, **732.650.9800 ext. 110**.

1. Go to the back of the panel.
2. Unplug the green connector.
3. Wait 1 minute.
4. Reconnect the green connector.

FAQ

Q. I am not interested in spending thousands of dollars on a control system to manage all of my components? What can you suggest?

A. Depending on your budget and the equipment involved we can offer a variety of universal remote's that will eliminate having a separate controller for each component. Call the service department to discuss some solutions.

Q. Can I convert my home wiring, CAT 5, that has a phone jack plug in each room to an Ethernet plug so I can network the house for my cable modem instead of going to a wireless networking system?

A. The answer is YES. If your house has CAT 5 cable we can convert the RJ-11 Jack Ports to certified RJ45 ports. However, your standard telephones or KSU based phone systems can't run together with the network, so you may want to consider wireless phones, unless you have 2 or more CAT-5 jacks in various areas.

Q. The image coming from my projector is blurry and the colors aren't as vivid anymore? What's going on?

A. Your projector may be in need of ISF (Imaging Science Foundation) calibration. ISF calibration is an in-depth adjustment of every aspect of picture. It is done right in your home so that your viewing environment is accounted for. It gives you better color and a noticeably sharper picture. EDG has certified ISF technicians available to make sure your projector is reaching its full potential. Contact Bob Kizlinski at 732.650.9800 ext. 110 or via [e-mail](#) to schedule an appointment.

If you would like to submit a question to appear in next months issue, [click here](#).

Follow Up Links

[The Princeton Record Exchange](#)

[Electro-Kinetics](#)

[Lutron Sivoia](#)

[Sony](#)

[EDG Award Winners](#)

[AMX Website](#)

Contact [EDG](#) at **(732) 650-9800** to find out how to make your next project the best it can be!